

JetPower

High pressure pump unit



High Pressure Technology

Table of contents

Our promise	4 5
Overview	6 7
JetPower 180	8
JetPower 300	10
JetPower 480	12
JetPower 600	14
Our programme	16

Dockyards in Estonia

Repair and maintenance of ships incur high costs and have to run smoothly. Ships are subject to a high level of wear – salt water and growth weaken the surfaces and regular repair is inevitable. The time spent in the docks has to be kept as short as possible, though, which represents an enormous challenge considering the huge surface areas of 40 – 50000 square metres. For this reason the repair specialists at the dockyards in Estonia require the best high pressure devices with the highest level of reliability and maximum endurance. They have found them at URACA.

Top performance requires a strong heart

Industry standard

URACA plunger pumps are designed for uninterrupted heavy duty operation 24 hours a day – for decades.

Variety

The optimum pump of URACA's product family for each unit.

Quality

URACA high pressure plunger pumps are manufactured in-house considering the highest quality standards.

Know-how

Since more than 125 years, URACA is manufacturing high pressure pumps.

Performance

Maximum pressure level and maximum flow rate. Not only on paper.

Energy efficiency

URACA products achieve highest efficiency. Cost-effective – year in and year out.



Quality without compromises

Water jet cleaning with up to 3000 bar in daily professional use is a tough challenge for a cleaning unit. The powerful heart of the JetPower range is crucial for performance and endurance and therefore also for economic efficiency: The URACA high pressure plunger pump.

Our philosophy:
the most **reliable units** in the market.



Developed for the future

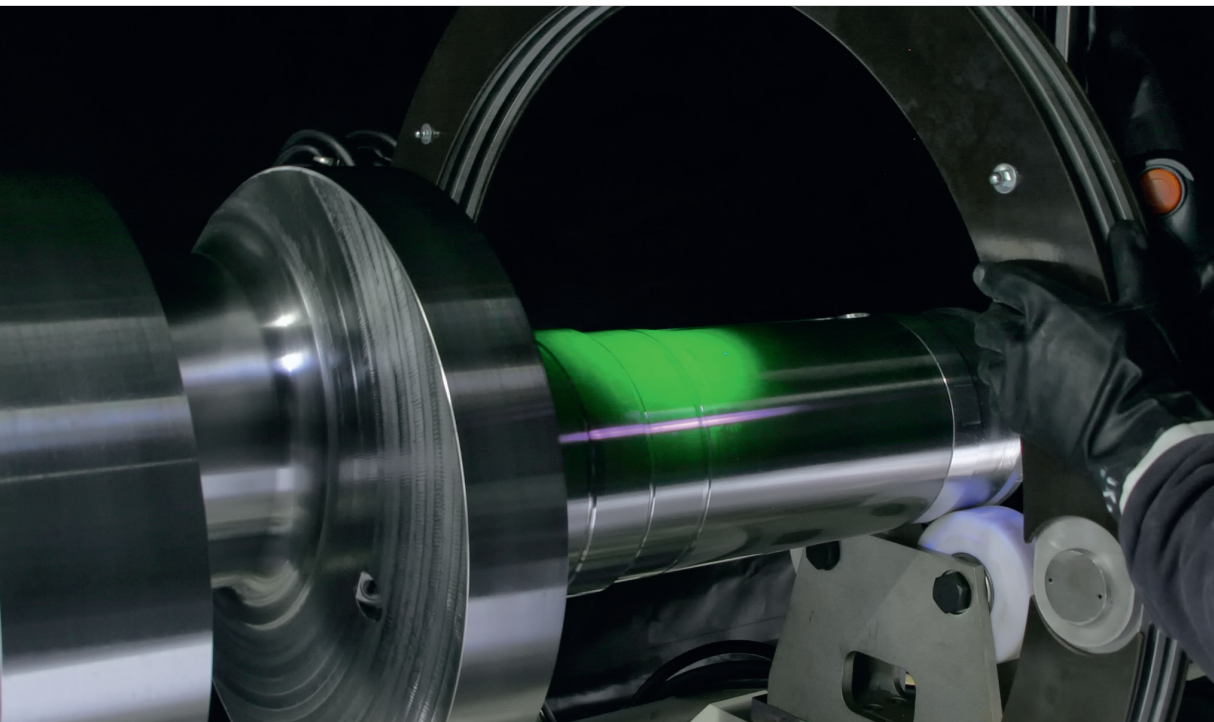
As a leading manufacturer in the field of high pressure water jet technology, URACA offers with the JetPower series diesel-operated pump units with a wide range perfectly matched solutions for professional cleaning. We do not invent superlatives on paper, but develop workhorses for practice. JetPower units are designed for maximum performance, efficient handling, durability and flexibility.

Proven under the toughest conditions

Diesel-operated pump units of the series JetPower are in operation worldwide under the toughest conditions. JetPower units easily withstand dirt and dust, extremely high and low temperatures and especially heavy duty conditions that such machines are subject to. Countless testimonials from enthusiastic users confirm the durability of URACA units. You also can work with the best power units available.



URACA power units in rough construction site applications – here we are at home.



Indestructible pumps with high-quality components allow efficient running costs for the units.

Built for professionals

Design intelligence, the best plunger pumps as a basis, vertical integration up to crank shafts completely manufactured in-house, precise machining and careful assembling by qualified employees as well as extensive test procedures ensure the reliable functioning of our products. This offers the best possible economic efficiency and lasting value. Every day. For many years.

Our promise

- Over 125 years of experience
- Production “Made in Germany”
- Highest vertical integration
- Comprehensive engineering know-how
- In-house testing operation
- Customised solution
- Excellent price-performance ratio
- Highest energy efficiency

The optimum **JetPower** high pressure unit for each application

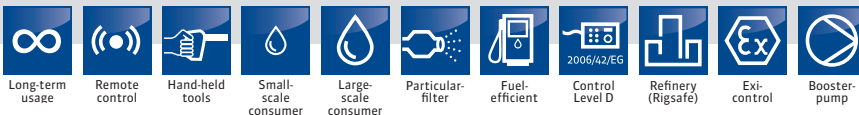
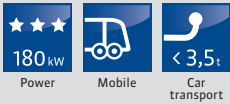


Application areas for JetPower			180	300	480	600
Casting core removal	l	Manual core removal with hand-held spray gun/spray lance	■	□	■	■
	m	Core removal with mechanically supported nozzle device	■	□	■	■
	s	Industrial core removal with robot-guided cleaning heads	□	□	□	□
High pressure cleaning	l	High pressure cleaning with hand-held spray gun/spray lance	■	□	■	■
	m	High pressure cleaning with mechanically secured, hand-held tools	■	■	■	■
	s	High pressure cleaning with robots, mechanically guided tools	□	■	■	■
Water jet cutting	l	Cutting with hand-held tools	□	■	■	■
	m	Cutting with mechanically secured cutting equipment	□	■	■	■
	s	Industrial cutting in continuous operation	□	■	■	■
Internal/external container and vessel cleaning	l	Cleaning of smaller containers	■	□	□	■
	m	Cleaning of containers with medium to large diameters	■	■	■	■
	s	Cleaning of containers with very large diameters	□	■	■	■
Cleaning/removal of road markings	l	Cleaning/removal of markings from smaller areas by hand-held spray gun/spray lance	■	■	□	□
	m	Cleaning/removal of markings from smaller to medium-sized areas with hand-held surface cleaning device	□	■	□	□
	s	Cleaning/removal of markings from large to very large areas with large cleaning machines	■	■	■	■
Rubber removal	l	Rubber removal from smaller areas with hand-held tools (spray gun/spray lance)	■	■	■	■
	m	Rubber removal from smaller to medium-sized areas with hand-held surface cleaning device	■	□	■	■
	s	Rubber removal from large to very large areas with large cleaning machines	■	■	■	■
Concrete demolition	l	Removal, surface treatment of smaller areas with hand-held tools	■	□	■	■
	m	Removal, surface treatment of medium-sized areas with mechanically guided and hand-held tools	■	□	■	■
	s	Removal, surface treatment of large areas with mechanically guided tools (e.g. removal robots)	□	■	■	■
Pipe cleaning	l	Cleaning pipes with smaller to medium diameter and small to medium length	■	■	■	■
	m	Cleaning pipes with large diameter and long length	□	■	■	■
	s	Cleaning pipes with very large diameter and long length	□	■	■	■
Well cleaning	l	Cleaning with hand-held tools (spray gun/Spray lance, surface cleaner)	□	■	■	■
	m	Cleaning with rotating nozzles	■	□	■	■
	s	Renovation with hose reels and rotary feedthrough units, RWK, TWK and rotating 2D nozzles	■	□	■	■
Heat exchanger cleaning	l	Cleaning with hand-held lances/tools	□	■	■	■
	m	Cleaning with mechanically secured lances/tools	■	■	■	■
	s	Cleaning with multiple lances/lance machines	□	■	■	■
Component cleaning	l	Cleaning with hand-held tools (spray gun/spray lance)	■	□	■	■
	m	High pressure cleaning with mechanically secured hand-held tools	■	□	■	■
	s	High pressure cleaning with robots, mechanically guided tools	■	■	□	□
Machine cleaning	l	Cleaning with hand-held tools (spray gun/spray lance)	■	□	■	■
	m	High pressure cleaning with mechanically secured hand-held tools	■	□	■	■
	s	High pressure cleaning with robots, mechanically guided tools	■	■	□	□

l = light m = medium s = severe

■ = ideally suitable □ = suitable ■ = limited suitable

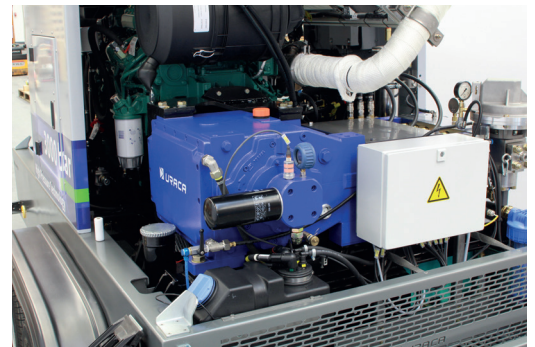
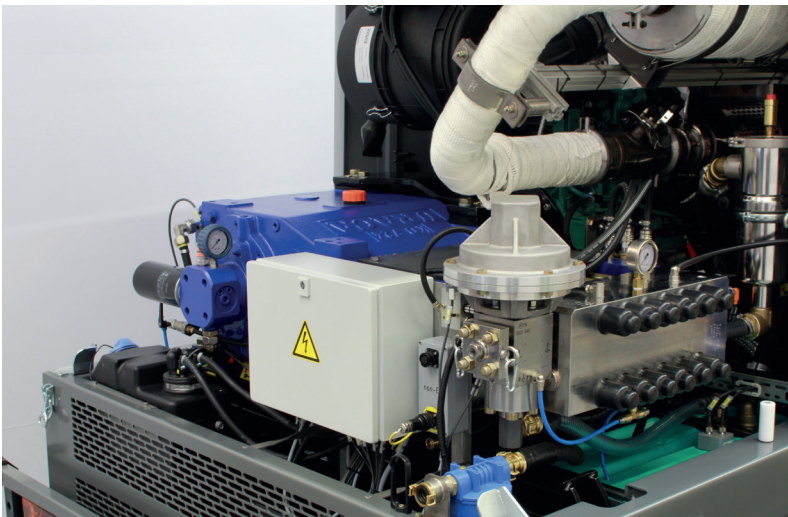
JetPower 180



JetPower 180	
Pump type	KD724-G
Standard pressure stages	800/1,000/1,200/1,600/ 2,000/2,800/3,000 bar
Flow rate	54.5-104 l/min at 800 bar 40.5-78 l/min at 1,000 bar 33-63 l/min at 1,200 bar 26-50 l/min at 1,600 bar 21-40 l/min at 2,000 bar Pressure stage 2,800 bar: 17-28 l/min at \geq 2,500 bar 17-30 l/min at \leq 2,500 bar 17-33 l/min at \leq 2,000 bar Pressure stage 3,000 bar: 15-24 l/min at $>$ 2,500 bar 15-26 l/min at \leq 2,500 bar 15-28 l/min at $>$ 2,000 bar
Drive power	160 kW/4 cyl./5.13 l
with Emission level	Stage V
Drive power	175 kW/6 cyl./6.7 l
with Emission level	3A
Diesel tank	280 l
Urea tank	25 l
Dimensions	
stationary without cover	approx. 3,100 x 1,600 x 1,935 mm
stationary with cover	approx. 3,100 x 1,600 x 1,935 mm
mobile with cover	approx. 4,670 x 2,070 x 2,210 mm
Dead weight	
stationary without cover	2,645 kg
stationary with cover	2,755 kg
mobile with cover	3,100 kg

Highlights

- Mobile compact unit for professional use
- Highly variable use, suitable for almost any task
- Available in emission level 3A/Stage V
- Sufficient power reserves on a very small footprint
- Easy and userfriendly control unit with colour display (optionally readable also with insolation)
- Flexible in use from delicate work up to large area and removal work
- Excellent capacity to weight ratio, unique on the market in this form
- Total weight less than 3.5 tons
- Carriage with standard passenger car ball-ended coupling (license category BE/C1E)



Accessories

Standard accessories package

- 1x spray gun / spray lance
- 1x fan or point nozzle
- 1x remote control cable, 20m
- 1x rotating cleaning nozzle RWD
- 1x hose pipe, 20m length

Accessory package pipe/heat exchanger cleaning

- 1x foot valve / foot switch
- 1x flexible lance
- 1x pipe cleaning nozzle, fixed
- 1x pipe cleaning nozzle, rotating

Multi-consumer

- MultiGunUnit
- Mobile release unit



Basic tools

- Spray gun SP
- Spray lances SL
- Flexible lances
- Fan nozzles
- Point nozzles
- High pressure hose pipe
- Foot valve FV

Protective clothing

- Ear protection
- Gloves
- Overalls
- Helmets
- Boots



Pipe cleaning tools

- Rotating cleaning heads RWK
- Pipe cleaning nozzle fixed/rotating
- Sewer cleaning nozzles
- Lance cleaning equipment



Surface cleaning tools

- Surface cleaning devices
- Hand-held surface cleaning devices HFL
- Nozzle beams
- Rotating cleaning nozzles RWD



Tank cleaning tools

- Tank cleaning heads TWK
- Small tank cleaners KBR



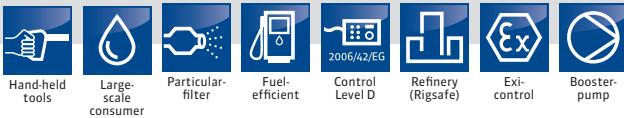
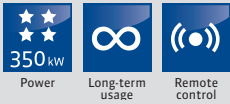
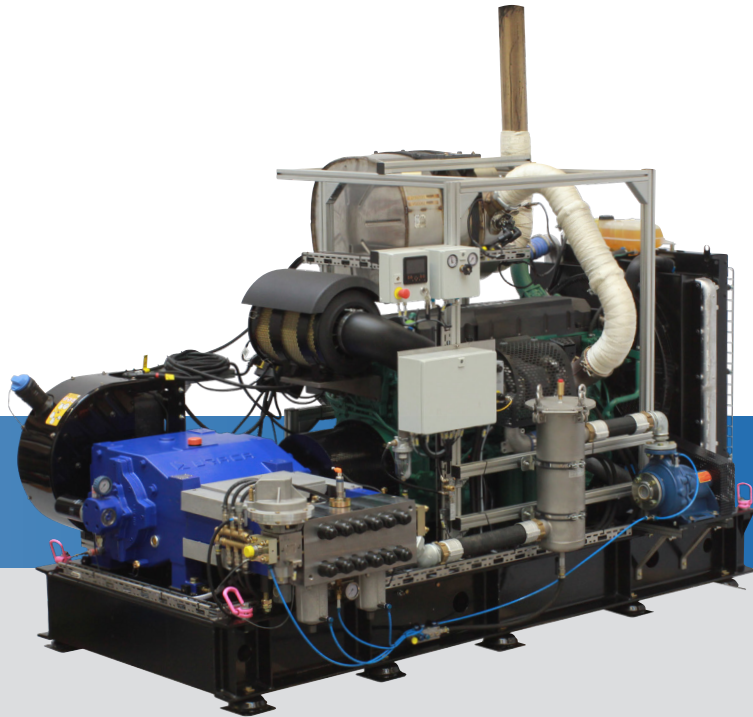
Remote control

- Remote control cable
- Radio remote control
- Foot switch
- Hand switch
- Cable drums

Special tools

- Robots
- Abrasive cutting heads
- Special tools customer-specific

JetPower 300

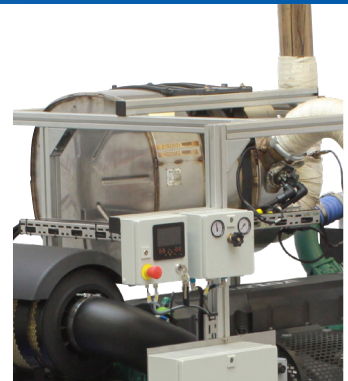
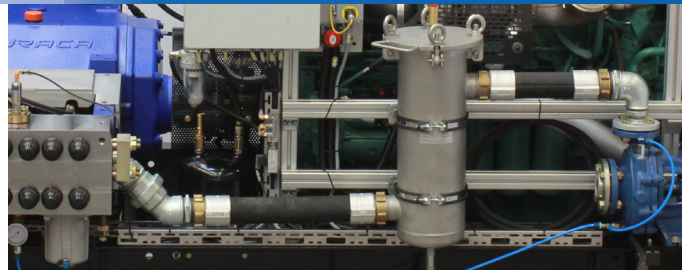
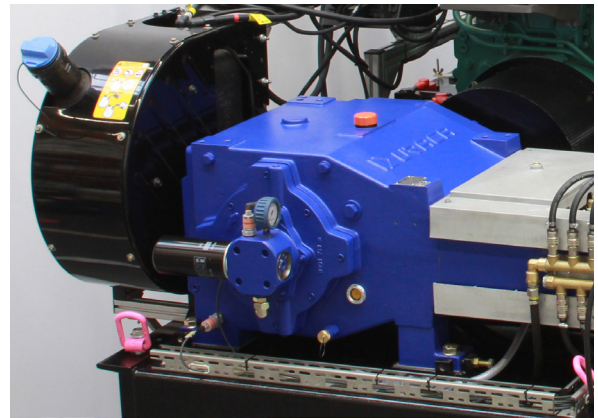


JetPower 300	
Pump type	P3-70
Standard pressure stages	800/1,000/1,200/1,400/1,550 2,000/2,500/2,800/3,000 bar
Flow rate	115.5-224 l/min at 800 bar 122-176 l/min at 1,000 bar 92-133 l/min at 1,200 bar 76.5-110 l/min at 1,400 bar 57-82 l/min at 2,000 bar 38-55 l/min at 2,500 bar 29-42 l/min at 2,800 bar 29-42 l/min at 3,000 bar
Drive power	345 kW/6 cyl./12.8 l
Emission level	3 A
Drive power	375 kW/6 cyl./12.8 l
Emission level	Stage V
Diesel tank	900 l (optional)
Water tank	1,500 l (optional)
Urea tank	75 l
Dimensions basis	approx. 3,130 x 1,810 (1,895) x 1,970 (2,210) mm
Dimensions in 20" Container	approx. 6,058 x 2,438 x 2,715 mm
Dimensions in 24" Container	approx. 7,450 x 2,438 x 2,591 mm
Dead weight	approx. 3,990 kg

Whether as a stationary installation in the container or mounted on an HGV – the JetPower 300 is a functional diesel unit that can meet almost any requirement. It features optimum power reserves and is ideal for use in industrial cleaning as well as for all areas of service.

Highlights

- Unit from the professional range
- Highly variable use, especially for large area tasks
- Available in emission level 3A/Stage V
- Large power reserves on a compact footprint
- Easy and userfriendly control unit with colour display (optionally readable also with insolation)



Accessories

- Multi-consumer
 - MultiGunUnit
 - Mobile release unit



- Basic tools
 - Spray gun SP
 - Spray lances SL
 - Flexible lances
 - Fan nozzles
 - Point nozzles
 - High pressure hose pipe
 - Foot valve FV



- Protective clothing
 - Ear protection
 - Gloves
 - Overalls
 - Helmets
 - Boots



- Pipe cleaning tools
 - Rotating cleaning heads RWK
 - Pipe cleaning nozzle fixed/rotating
 - Sewer cleaning nozzles
 - Lance cleaning equipment



- Surface cleaning tools
 - Surface cleaning devices
 - Hand-held surface cleaning devices HFL
 - Nozzle beams
 - Rotating cleaning nozzles RWD



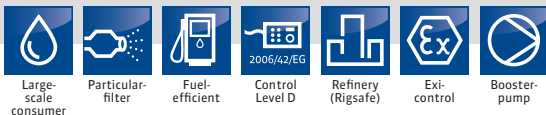
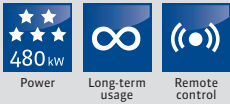
- Remote control
 - Remote control cable
 - Radio remote control
 - Foot switch
 - Hand switch
 - Cable drums

- Special tools
 - Robots
 - Abrasive cutting heads
 - Special tools customer-specific



- Tank cleaning tools
 - Tank cleaning heads TWK

JetPower 480

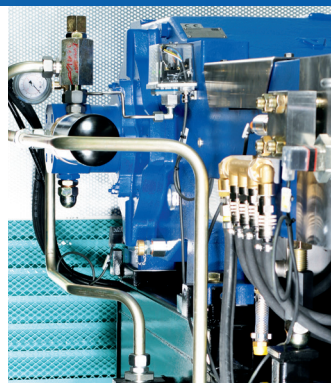
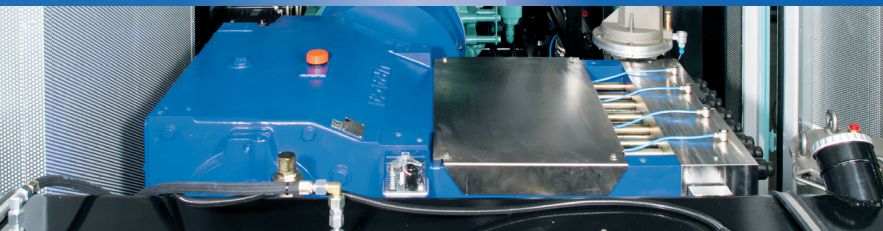


	JetPower 480
Pump type	P4-70
Standard pressure stages	800/1,000/1,200/1,400/1,550/ 2,000/2,500/2,800/3,000 bar
Flow rate	212-305 l/min at 800 bar 165-238 l/min at 1,000 bar 125-180 l/min at 1,200 bar 105.5-152 l/min at 1,400 bar 78.5-113 l/min at 2,000 bar 50.5-73 l/min at 2,500 bar 39-56 l/min at 2,800 bar 39-56 l/min at 3,000 bar
Drive power	565 kW/6 cyl./16.2 l
with Emission level	2A
Drive power	585 kW/6cyl./16,1 l
with Emission level	Stage V
Diesel tank	900 l (optional)
Water tank	1,500 l (optional)
Dimensions basis	approx. 3,900 x 1,815 x 2,110 mm
Dimensions in 20" container	approx. 6,058 x 2,438 x 2,715 mm
Dimensions in 25" container	approx. 7,450 x 2,438 x 2,591 mm
Dead weight	approx. 4,800 kg

The JetPower 480 is ideally suited for cleaning large vessels or containers and for medium and heavy-duty removal tasks. The unit remains mobile whether mounted on an HGV or in a container. The high level of power and the convincing flexibility despite the size make the JetPower 480 an ideal solution for any application in the high pressure sector.

Highlights

- High pressure unit from the professional range
- Highly variable use, especially suitable for medium to heavy-duty tasks
- Large power reserves on a compact footprint
- Easy and userfriendly control unit with colour display (optionally readable also with insolation)
- Optimum performance weight and flexible design (stationary or on an HGV)



Accessories



- Multi-consumer
- MultiGunUnit



- Basic tools
- Flexible lances
- Fan nozzles
- Point nozzles
- High pressure hose pipe
- Foot valve FV



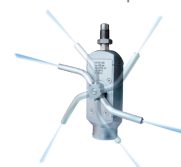
- Protective clothing
- Ear protection
- Gloves
- Overalls
- Helmets
- Boots



- Pipe cleaning tools
- Rotating cleaning heads RWK
- Pipe cleaning nozzle fixed/rotating
- Sewer cleaning nozzles
- Lance cleaning equipment



- Surface cleaning tools
- Surface cleaning devices
- Nozzle beams
- Rotating cleaning nozzles RWD



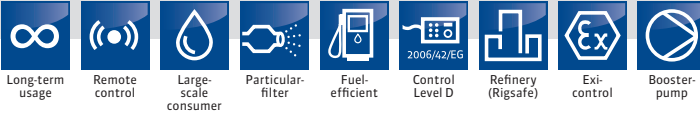
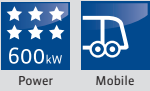
- Tank cleaning tools
- Tank cleaning heads TWK



- Remote control
- Remote control cable
- Radio remote control
- Foot switch
- Hand switch
- Cable drums

- Special tools
- Robots
- Special tools customer-specific

JetPower 600

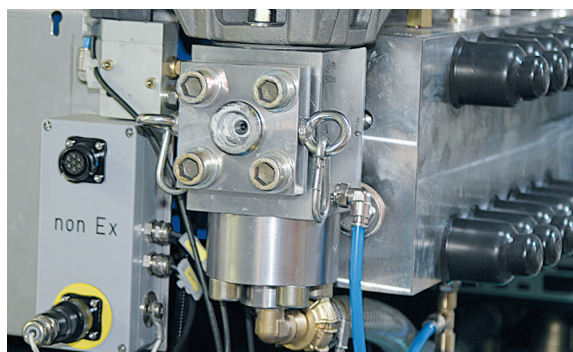
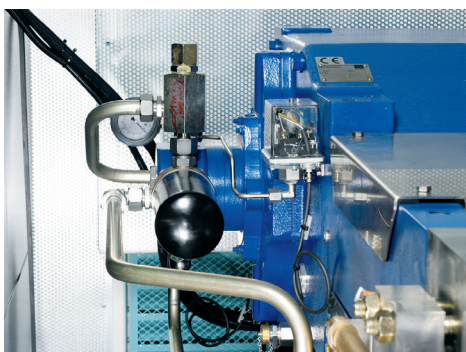
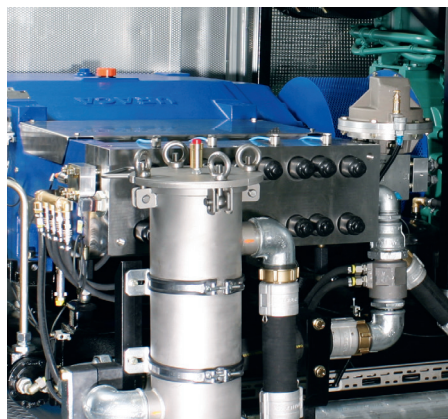


JetPower 600	
Pump type	P5-70
Standard pressure stages	800/1,000/1,200/1,400/1,550/ 2,000/2,500/2,800 bar
Flow rate	265-381 l/min at 800 bar 206-297 l/min at 1,000 bar 156-255 l/min at 1,200 bar 132-190 l/min at 1,400 bar 98-141 l/min at 2,000 bar 63-91 l/min at 2,500 bar 48.5-70 l/min at 2,800 bar 48.5-70 l/min at 3,000 bar
Drive power	565 kW/6 cyl./16.2 l
with Emission level	2A
Drive power	585 kW/6 cyl./16,1 l
with Emission level	Stage V
Diesel tank	900 l (optional)
Water tank	1,500 l (optional)
Dimensions basis	approx. 4,045 x 1,815 x 2,110 mm
Dimensions 20" container	approx. 6,058 x 2,438 x 2,715 mm
Dimensions 24" container	approx. 7,450 x 2,438 x 2,591 mm
Dead weight	approx. 5,250 kg

The JetPower 600 is an absolute high performance unit. This professional unit is in the right place wherever large surfaces have to be treated or cleaning tasks require a high level of power.

Highlights

- High pressure unit from the top range
- Highly variable use, suitable for almost any task
- Sufficient power reserves on a compact footprint
- Easy and userfriendly control unit with colour display (optionally readable also with insulation)
- Excellent performance weight, flexible mounting options, e.g. as a container structure or mounted on an HGV



Accessories



- Multi-consumer
- MultiGunUnit



- Basic tools
- Flexible lances
- Fan nozzles
- Point nozzles
- High pressure hose pipe
- Foot valve FV



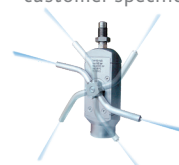
- Protective clothing
- Ear protection
- Gloves
- Overalls
- Helmets
- Boots



- Pipe cleaning tools
- Rotating cleaning heads RWK
- Pipe cleaning nozzle fixed/rotating
- Sewer cleaning nozzles
- Lance cleaning equipment



- Surface cleaning tools
- Surface cleaning devices
- Nozzle beams
- Rotating cleaning nozzles RWD



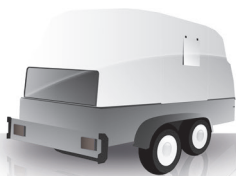
- Tank cleaning tools
- Tank cleaning heads TWK

- Remote control
- Remote control cable
- Radio remote control
- Foot switch
- Hand switch
- Cable drums

- Special tools
- Robots
- Special tools customer-specific

URACA – the professional system provider in the field of **High Pressure**

Product range



— Units

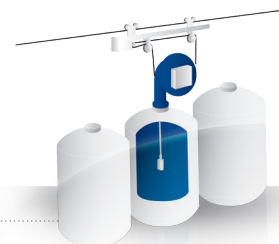
No pump without drive. This is why URACA manufactures a vast variety of pump units. Whether mobile or stationary, with different drives and in almost all size, equipment and design. User-friendly, economical, powerful and built for professional use in industry and service.

- Diesel driven units
- Electrically driven units
- Hydraulically driven units

— Pumps

The heart of the URACA technology: Superior quality, extremely powerful high pressure positive displacement pumps, also for high-demanding continuous use.

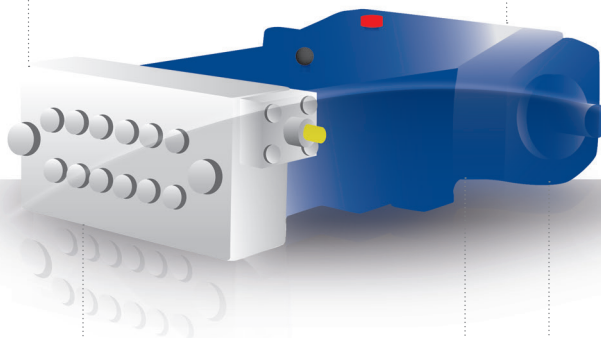
- Process and industrial pumps
- Testing pumps
- Cleaning pumps
- Sewer cleaning pumps



— Plants and systems

Especially for cleaning applications URACA has a lot of experience and engineering competence with respect to designing and manufacturing complete systems, from simple positioning devices up to complex cleaning units.

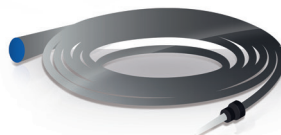
- Tank cleaning
- Heat exchanger cleaning



— Tools

In high pressure cleaning the efficiency depends on the tool. This is why URACA manufactures a complete system of highly efficient and high quality cleaning tools for any possible application.

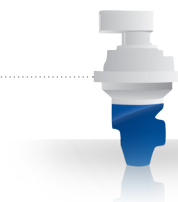
- Spray guns
- Tank cleaning heads
- Sewer cleaning nozzles
- Rotating nozzles
- Floor cleaners



— Accessories

Anyone working with the best pumps and pump units does not leave anything to chance when it comes to accessories. We therefore provide our customers a wide range of high pressure accessories for any application.

- Nozzles
- Remote controls
- Hoses
- Protective clothing



— Components

Only highest quality system components guarantee high performance and permanent functioning of high pressure systems. URACA with its experience therefore designs and manufactures the best high pressure components in a vast variety of designs.

- Valves
- Rotary feedthrough units
- Multi-consumer systems
- Resonators, pulsation dampers
- Lubrication, flushing and injection components